

PART OF THE NE.1/4, OF SEC. 9, T.5N., R.1W., S.L.B. & M.

224

## HERITAGE PLACE

A PLANNED RESIDENTIAL UNIT DEVELOPMENT

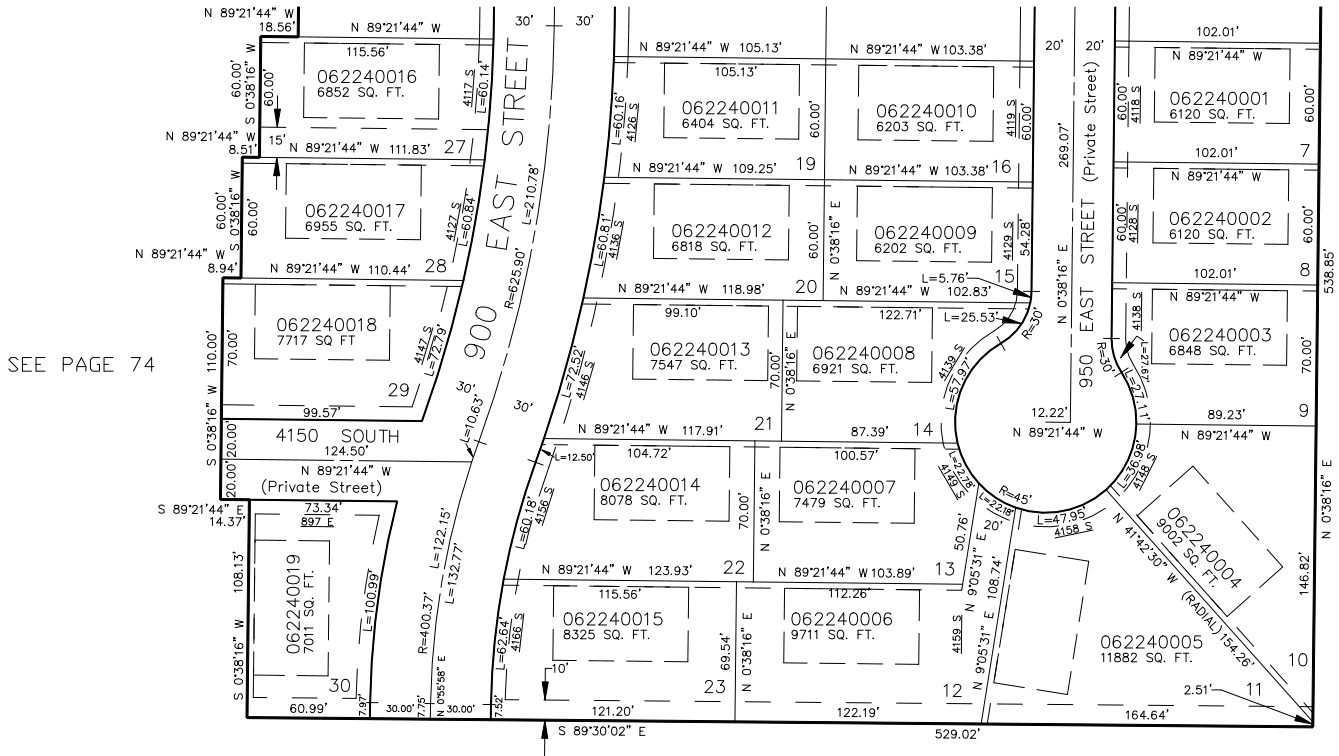
TAXING UNIT: 27

PHASE NO. 1

IN SOUTH OGDEN CITY

SCALE 1" = 50'

SEE PAGE 223



SEE PAGE 74

SEE PAGE 74

7' UTILITY & DRAINAGE EASEMENTS AND  
3' PRIVATE EASEMENTS EACH SIDE OF  
PROPERTY LINES AS INDICATED BY  
DASHED LINES EXCEPT AS OTHERWISE  
SHOWN.

BUILDING ENVELOPES ARE 37' WIDE  
AND 67' DEEP TYP.  
SEE ORIGINAL DEDICATION FOR  
DETAILED DIMENSIONS.

FOR COMPLETE ENG DATA SEE  
ORIGINAL DEDICATION PLAT IN  
BOOK 38, PAGE 72 OF RECORDS.

\*SEE CORRECTION AFFT.  
BOOK 1799 PAGE 2757  
E#1397858